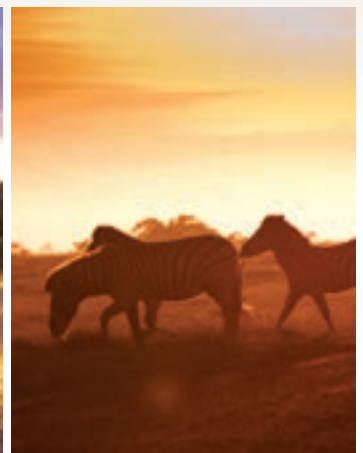


## Kwena Lodge



Kwena Lodge is modern and luxurious, nestled into its spectacular fynbos natural surroundings with 180-degree views of the expansive mountainous landscape and passing wildlife. It's unique layout, design and decor draws inspiration from the way of life of the nomadic Khoi-San people that lived in the area in times gone by.

The spacious Kwena lodge facilities include a large infinity pool surrounded by semi-private sun lounging decks, chic open-plan lounge and bar area connected by expansive wooden decks and walkways. Dining is offered in beautiful indoor and outdoor settings including an elegant dining room set around 2 open fireplaces, an outdoor thatched modern dining space overlooking two waterholes. Guests are treated to delicious brunches, fun family picnics, evening barbecues and scenic sundowner spots.

When visiting Kwena Lodge, guests can choose to stay in the romantic Kwena Lodge Suites or Luxury Kwena Lodge Villas. Kwena Lodge Suites are situated at the lodge overlooking the infinity pool and waterhole and can accommodate two people. Families and larger groups are accommodated at Kwena Lodge Villas which offer spacious, private luxury accommodation in 2 and 3 bedroom villas, only 5 minute drive from the main lodge. Gourmet family barbecue (braai) packs are available for Kwena Lodge Villa guests to host private bush dinners at their Villa. Both guests staying at Kwena Lodge Suites and Kwena Lodge Villas make use of all Kwena Lodge facilities. All Game Drives and activities depart daily from Kwena Lodge.





## *Kwena Lodge Suites*



Kwena Lodge Suites are 14 stand-alone on-suite bedrooms: 75m<sup>2</sup>, open plan, double volume with thatch roof and mountain views;

- Large bathroom with rain shower, deep bath with picture window, double sinks and separate toilet room
- Indoor seating area by fireplace, separate dressing area, and private covered patio with double lounger
- King or Twin Beds (13 of the Kwena Suites can be split into twin beds), 100% cotton linen, bath towels and bath robes, non-allergenic pillows, hairdryer, tea station and bar fridge. In-room safety-deposit box, electricity: AC 220V, free WIFI
- Twice-daily housekeeping with turn downs



## *Kwena Lodge Villas*



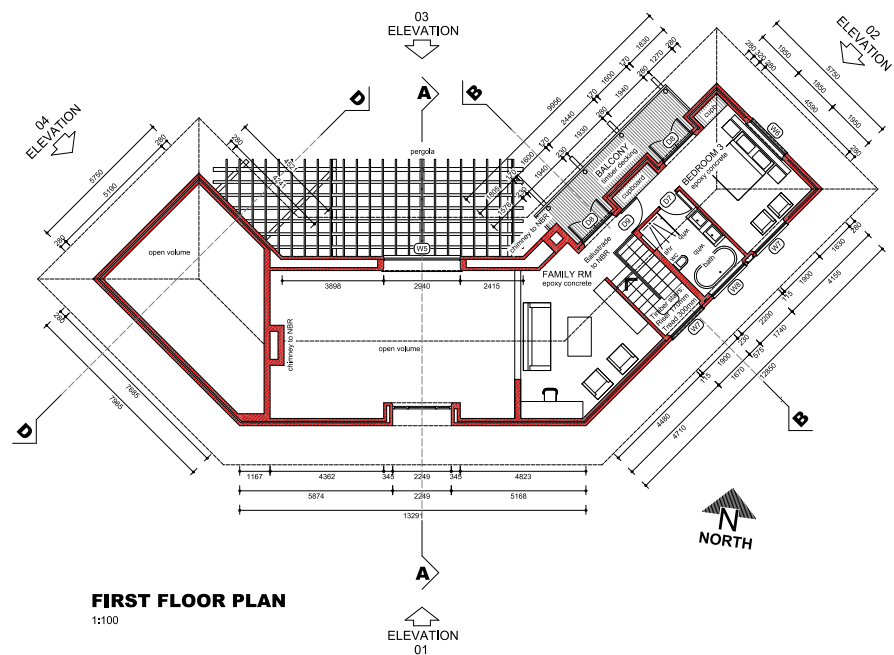
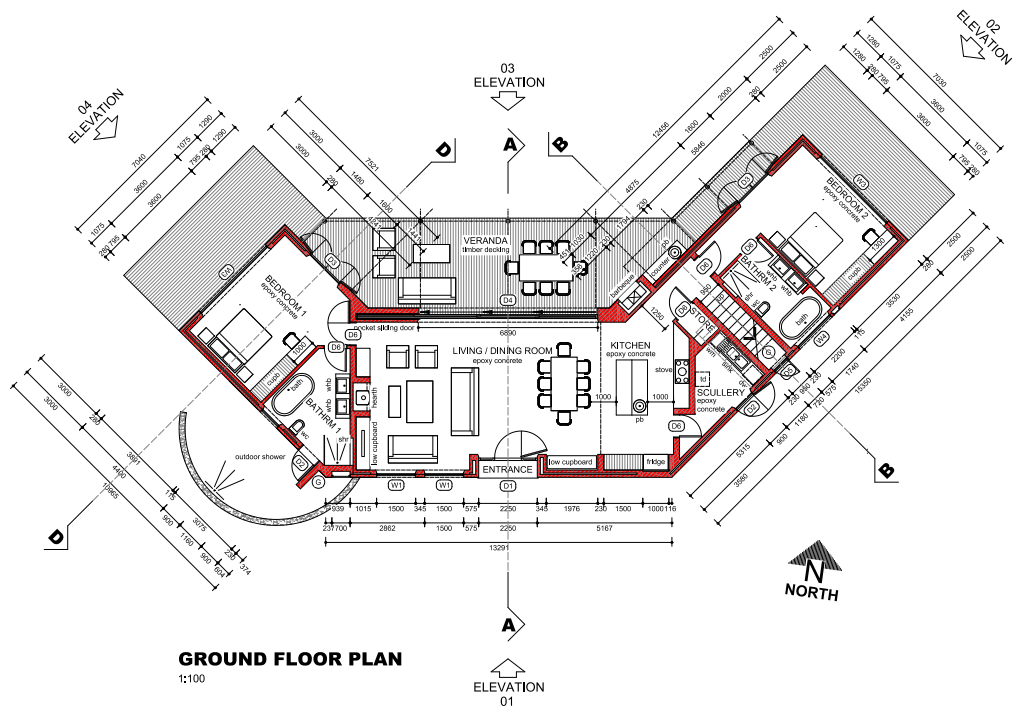
Accommodation at Gondwana's Kwena Lodge includes the 7 Kwena Lodge Villas, which offer total privacy and spaciousness to groups particularly families with children. The deluxe three and four bedroom villas feature an open plan lounge with kitchen and dining room all opening onto a wraparound deck with magnificent valley and mountain views. Guests staying at Kwena Lodge Villas are on a full board basis which includes; accommodation, breakfast, lunch and dinner, Fynbos Walking Experience, Gondwana's popular Junior Ranger Programme, Mountain Biking, afternoon tea as well as morning and afternoon game drives.

. Transfers are included to and from Kwena Lodge for meals and game drives.

- Villas are approximately 350m<sup>2</sup> - 460m<sup>2</sup> in size and ideal for families and groups
- Villa facilities include: Open plan, double volume lounge, kitchen and dining area with thatch roof, fireplace and Smart TV with Netflix
- Expansive deck with BBQ and magnificent valley and mountain views
- Bedrooms with king or twin beds, seating areas, fireplaces and private deck areas;
  - En-suite bathrooms with walk in shower, deep bath, double sinks, 100% cotton linen, bath towels and bathrobes, Non-allergenic pillows, hairdryer, tea station and bar fridge. In-room safety-deposit box, electricity: AC 220V, free Wifi
  - Twice-daily housekeeping with turn downs



# Three Bedroom En-Suite Villa

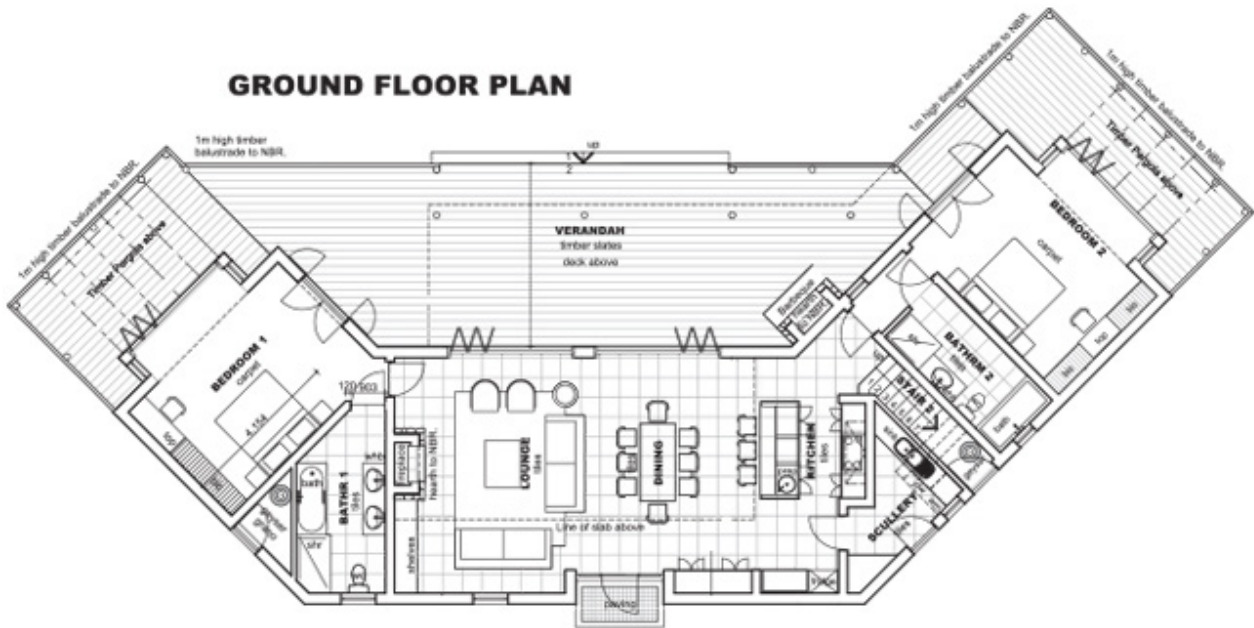


## Specifications

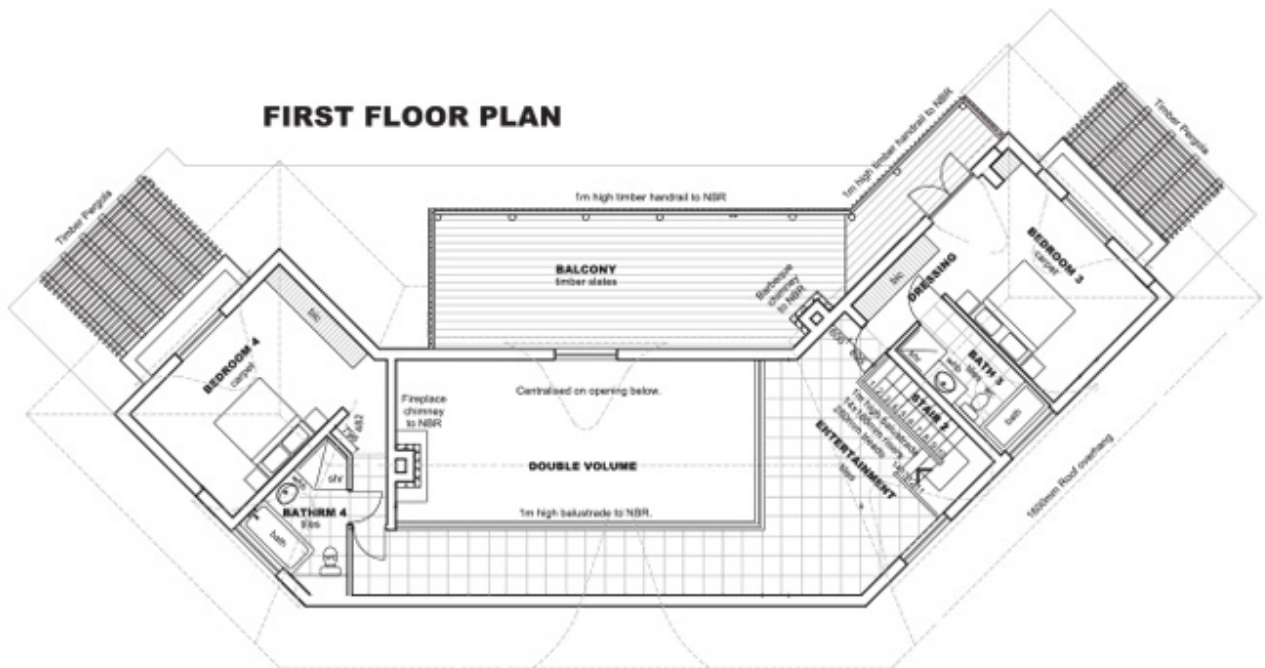
- Total size: 370m<sup>2</sup>
- 245m<sup>2</sup> interior ground floor and first floor
- 125m<sup>2</sup> exterior deck and balcony
- 3 bedrooms with en-suite bathrooms
- Open plan, double volume living area including lounge, dining and kitchen
- Separate office or TV room upstairs
- High quality finish – thatch roof, wooden folding doors and decking.

# Four Bedroom En-Suite Villa

**GROUND FLOOR PLAN**



**FIRST FLOOR PLAN**



## Specifications

- Total size: 466m<sup>2</sup>
- 308m<sup>2</sup> interior ground floor and first floor
- 158m<sup>2</sup> exterior deck and balcony
- 4 bedrooms with en-suite bathrooms
- Open plan, double volume living area including lounge, dining and kitchen
- Separate office or TV room upstairs
- High quality finish – thatch roof, wooden folding doors and decking.