

# FRONTIER LANDS OF PAPUA NEW GUINEA

BETWEEN CAIRNS & MADANG

12 NIGHTS | DEPARTS 18 & 30 DECEMBER 2025



①

## Expedition Highlights

- > Throughout the voyage, enjoy high-spirited cultural welcomes and sing sings as we are invited into rarely visited villages to share stories with the locals
- > Cruise the mighty Sepik River to Bien village, home to skilled wood carvers and renowned artefact markets
- > Ride ashore on hand-carved outrigger canoes paddled by local guides adorned in ceremonial costumes in the Tufi fiords
- > Enjoy the tropical waters with snorkelling and diving at the Fly Islands, and the bubbling springs reef at Dobu
- > Visit WWII battle sites at Buna & Sanananda
- > Enjoy a high-spirited Oro Province welcome sing sing at Morobe as we are invited into remote villages
- > Learn of the mythical and spiritual tales of Dei Dei Hot Springs, and witness the boiling geyser erupt
- > Learn how the Trobriands became known as the 'Islands of Love'



②



## ITINERARY: 12 NIGHTS > BETWEEN CAIRNS & MADANG

### DAY 1: DEPART CAIRNS

Board *Coral Adventurer* at 7:30 am for a 9:00 am departure. This evening, meet your crew and fellow guests at the Captain's welcome drinks.

### DAYS 2-12:

*Throughout this expedition, your Expedition Team may make changes to the itinerary in order to maximise your expeditionary experience. Visiting these remote communities is subject to approval of the local landowners. Below are the key destinations we visit.*

#### SAMARAI ISLAND

Located off the south-eastern tip of New Guinea in the China Strait, choose to explore the colonial settlement of Samarai, with a chance to purchase pearls from a local pearl farmer, or go for a snorkel at nearby Ebuma Island.

#### DOBU ISLAND & DEI DEI SPRINGS, PAPUA NEW GUINEA

We are greeted by a flotilla of canoes as we approach the Dobu anchorage. Join our Expedition Staff on a walk to Dei Dei Hot Springs, where the people share their mythical and spiritual tales of these hot water and mud springs. Learn of the history of the Kula Ring at Dobu Island and meet the local primary school children, who will welcome us with a traditional song. There will also be an opportunity to snorkel the incredible Bubbling Springs Reef.

#### TROBRIAND ISLANDS

Historically known as the 'Islands of Love', the Trobriand Islands offer a glimpse of traditional cultures largely unspoiled by outside influence. Be greeted at the small island of Kuiawa with an enthusiastic Trobriand's welcome.

#### TUFI FJORDS

Today enjoy a true highlight as we discover the scenic beauty of the Tufi Fjords. Featuring 25 individual canyons with sheer basalt cliffs, these are the only fjords in Papua New Guinea and offer a wealth of sightseeing opportunities. Aboard *Xplorer*, travel to the entrance of one of Tufi's most scenic fjords where you will be met by local villagers in traditional dress aboard outrigger canoes. Have the opportunity to board one of the outriggers as the locals paddle up the creek under the rainforest canopy. Here, spirits and sorcery remain integral to village life, and we will learn about bush medicines, fire making, mat weaving and traditional tattooing. Deep in the rainforest, have the chance to witness the tribesmen perform a traditional sing song in their ceremonial dress. Later, discover white sand beaches, or snorkel or dive over spectacular fringing reefs.

#### BUNA & SANANANDA

We land at Buna beach, home to some of the toughest fighting in the WWII Pacific campaign. Enjoy a welcome from the local residents, and then be guided through the jungle to visit the areas where Allied forces clashed with Japanese forces. In Sanananda, see the local monuments and pay tribute to fallen Australian soldiers at the war museum, located at the far end of the Kokoda Track. You'll also have the opportunity to visit the lush gardens surrounding the village.

#### MOROBE HARBOUR

We arrive at Morobe Harbour early in the morning and cruise in the *Xplorer* to view the stunning forest from the Mou River. We receive a warm Oro Province welcome and enjoy exploring the village with local guides. At high tide, we may be able to cruise further into a picturesque hidden bay.

#### KAMIALI (LABABIA VILLAGE) & FLY ISLANDS

In the morning, during a relaxing visit to the village, we are entertained with singing and dancing performances and join a local guide around the village. Board an outrigger canoe

to explore further up the river with a guide and experience snorkelling and diving at the Biangatu Island reef in the Fly Islands.

#### DREGERHAFEN

At the beautiful anchorage of Dregerhafen, you will enjoy a high-spirited traditional welcome in Gingala village, and explore the market which is famous for Tami bowls and timber paddles before the chance to mingle with the locals and stroll through the village. After lunch enjoy snorkelling, diving and kayaking in the blue waters of the lagoon.

#### KARKAR ISLAND

Visit Busen or Maringis Villages at Karkar Island and enjoy welcome sing sings before touring the copra and cocoa processing areas. In the afternoon there is opportunity to snorkel off the fringing reef and bommies close to shore.

#### SEPIK MOUTH, BIEN VILLAGE & KADOVAR VOLCANO

As we arrive at the mouth of the famed Sepik River we are greeted with stunning views of the landscape and this mammoth river which cuts a swathe through lush forest. Our first stop on the Sepik River is at the village of Bien, where local villagers greet us on their canoes and follow with dance performances. There is an opportunity to purchase highly sought-after hand-crafted artefacts, masks and carvings at the Sepik market.

#### DAY 13: ARRIVE MADANG

Arrive in Madang to disembark *Coral Adventurer* at 8:00am. Enjoy an included tour of Madang with a member of our expedition team before boarding your charter flight to Cairns.

#### REVERSE DIRECTION:

This itinerary is also available in the opposite direction, departing Madang and arriving Cairns. For our Madang to Cairns itinerary, your charter flight will board in Cairns.

#### OPTIONAL CHARTER FLIGHT

Optional charter flights between Madang & Cairns are available at approximately \$1250 per person. This will be a direct flight, and a Coral Expeditions staff member will accompany guests. Limited seats available, call our reservations team for more information.



#### VOYAGE LOG

"Traditional canoes expertly steered by children and led by a magnificent leader standing on a canoe platform to deliver his welcome, ferried us across to a welcome by black-painted warriors and girls throwing petals. On a grassy expanse in the pretty village of Natade, dancers performed for us, dressed in beaten barkcloth or tapa, decorated with ancient clan designs, and sporting elaborate headdresses topped with the plumes of Raggiana birds-of-paradise, cassowary and cockatoos. This was followed by a number of well-designed demonstrations of traditional practices, including the tattooing of women's faces, fire making, the production and decoration of tapa, and the application of traditional medicines."

JAMIE ANDERSON > TUFI FJORD, 5 NOVEMBER 2019

# CORAL ADVENTURER

Passengers: 120 | Staterooms: 60  
Length: 93.4m | Draught: 4.5m | Tonnage: 5,516

Our expedition vessel, *Coral Adventurer*, will be your home for this voyage. *Coral Adventurer* accommodates 110 guests in 60 spacious staterooms, with all Explorer Deck staterooms, Bridge Deck staterooms and suites offering private balconies.

With over 1000sqm of open deck space including a wrap-around promenade deck with panoramic views, *Coral Adventurer* features spacious and vibrant living spaces inspired by the company's Australian ethos and the wide-open spaces the ship visits. Multiple indoor and outdoor bars, including the Xplorer bar on the sundeck, a well-equipped gym and a passenger elevator creates an environment designed for guest comfort.

*Coral Adventurer* is purpose-built for comfortable ocean voyages and for exploring remote areas inaccessible to larger cruise ships. The ship's lightweight dual Xplorer expedition tenders extend the capabilities of the ship by allowing deeper exploration, on shore excursions and an easy, step-on embarkation from the ship's main deck. *Coral Adventurer* also features advanced technologies and environmentally-responsible design, including anchor-free technology and efficient water and waste recycling systems.

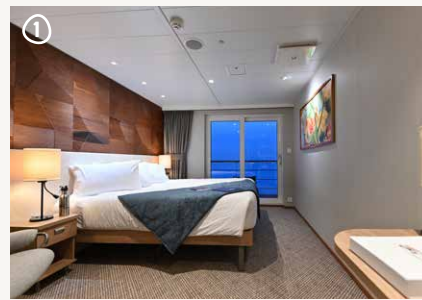
As an Australian flagged and crewed vessel, you can expect the highest standard of service, environmental responsibility and the intimate and personal experience of small-ship cruising on *Coral Adventurer*.

## Features

• 2 Xplorer tenders, 6 Zodiacs • Navigator Lounge in Bridge • Single seat dining • Three cocktail bars • Well-equipped gym • elevator • Anchor-free technology

## Stateroom Categories

Bridge Deck Balcony Suites	• 55.8sqm • Private Balcony
Bridge Deck Balcony Staterooms	• 21.4sqm • Private Balcony
Explorer Deck Balcony Staterooms	• 21.4sqm • Private Balcony
Promenade Deck Staterooms	• 17sqm • Picture Window
Coral Deck Staterooms	• 17sqm • Porthole Window



IMAGES 1 Explorer Deck Stateroom | 2 Bridge Deck Suite Bathroom

3 Bridge Deck lounge | 4 Xplorer | 5 Toasts on the vista deck | 6 Dining room