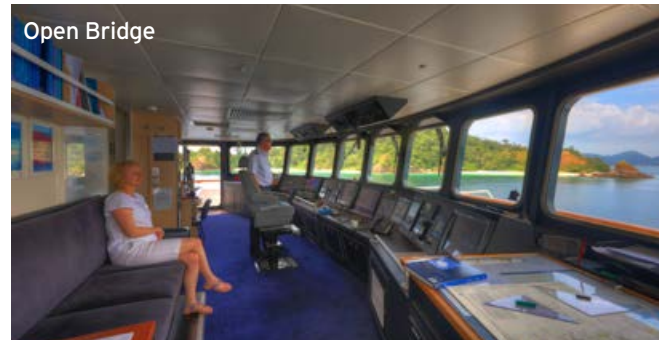


ONBOARD LIFESTYLE

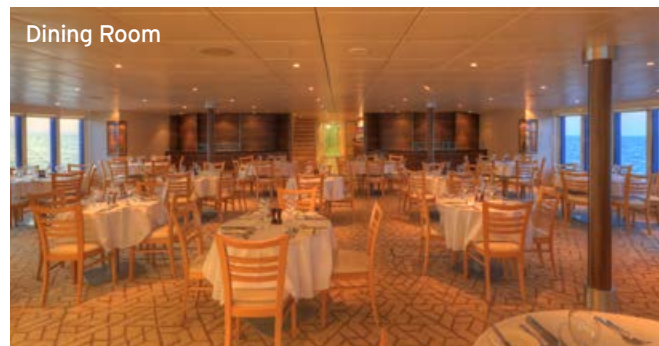
In November 2016 a significant upgrade and refresh of facilities aboard *Coral Discoverer* was completed, this brings her amenities to an even higher level. The Sun Deck has evolved to become a new social space and the hub of on board community living. This area has been converted into an undercover deck area complete with round 'Explorers Bar' with bar stools and sun deck with lounges and on Promenade Deck an area for outdoor exercise equipment.



The Xplorer



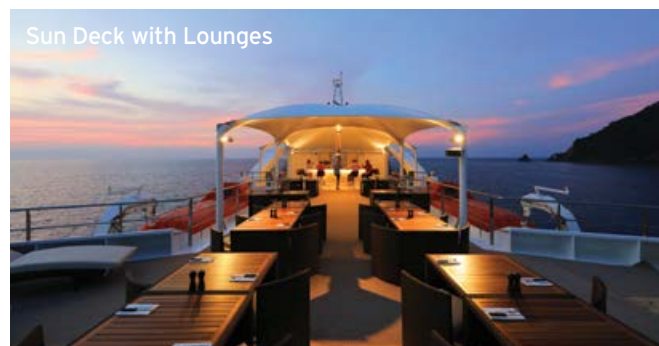
Open Bridge



Dining Room



Three fully stocked cocktail bars including Explorers Bar



Sun Deck with Lounges



Bridge Deck Lounge



Expeditions to > Great Barrier Reef > Tasmania > The Kimberley > Cape York & Arnhem Land > Spice Islands & Raja Ampat



coralexpeditions

AUSTRALIA'S PIONEERING CRUISE LINE

EXPEDITION SHIPS

Tasmania > The Kimberley > Papua New Guinea > Cape York & Arnhem Land > Spice Islands & Raja Ampat > New Guinea Circle



The 1779-tonne *Coral Discoverer* is the grand vision of Coral Expeditions, pioneers in expedition and adventure cruises around Tasmania, The Kimberley and Papua New Guinea. Her shallow draught and manoeuvrability allow her to go where larger vessels cannot.

The ship features a tender vessel, *Xplorer*, which can seat all 72 passengers for excursions to beaches and rivers. *Coral Discoverer* is equipped with latest technology active stabilisers to ensure comfortable cruising in open waters and is fitted with modern safety and navigation equipment and wireless internet facilities.

Following her full refurbishment in 2016, the *Coral Discoverer* now offers Bridge Deck Staterooms with a private balcony opening out from french doors. All rooms are furnished with contemporary flair and feature original artwork, a small private en-suite, individually-controlled air-conditioning, an iPod dock, ample storage and Australian toiletries.

In the Bridge Deck Lounge guests can ensure comfort whilst enjoying interpretive lectures by our guides or enjoy a drink from the new Explorers Bar on the Sun Deck with the comfort of a new shade cover.

Australian flagged, and staffed by Australian and New Zealand crew, your experience aboard *Coral Discoverer* will be unique.

FACILITIES

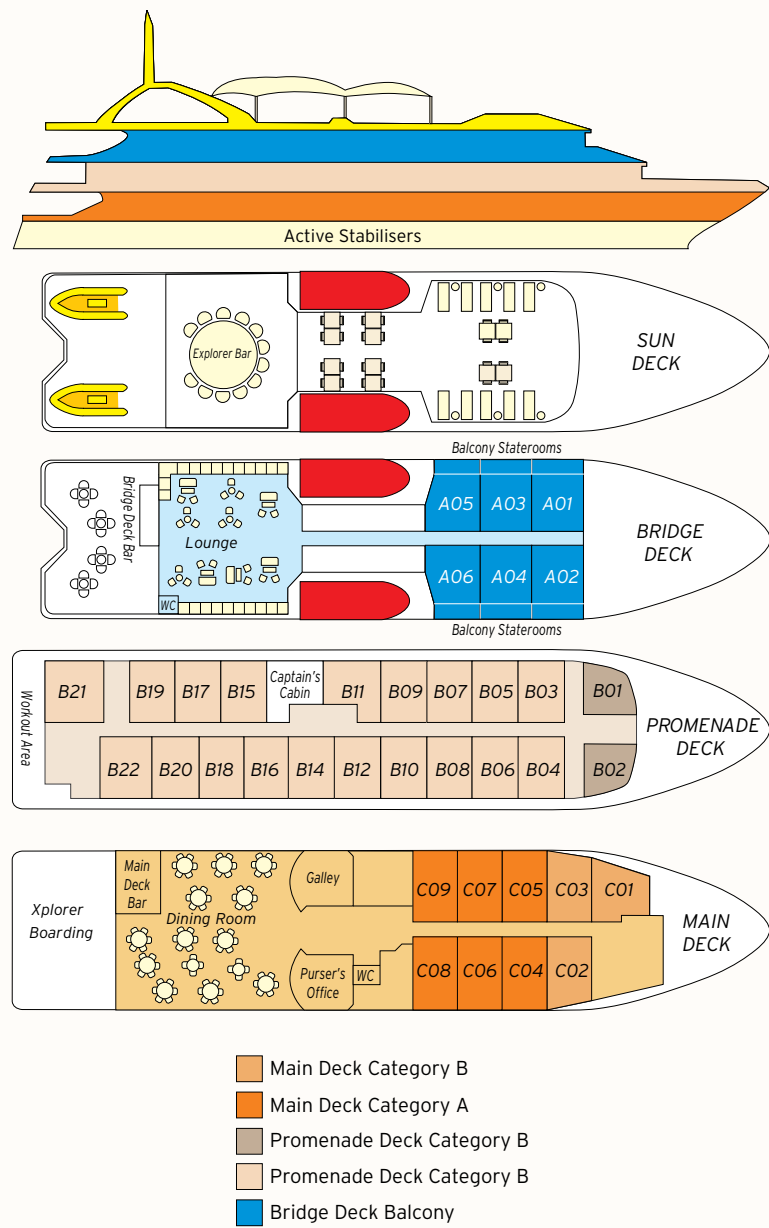
- > Sun Deck with sun lounges and shade cover
- > Three fully stocked cocktail bars, Explorers Bar on Sun Deck and Balcony Staterooms
- > *Xplorer* / Zodiacs / Kayaks/ Glass-Bottom Boat
- > Spacious, modern dining room
- > Bridge Deck Lounge with projector screen
- > Reference library
- > Small gift shop with souvenirs and personal items available for purchase
- > Open Bridge
- > Limited laundry facilities available
- > Scuba diving department (selected itineraries)
- > Satellite wireless internet available

Service quality may vary on location and weather

DECK PLANS AND SHIP INFORMATION

VESSEL

Name	Coral Discoverer
Registration Number	857420
Owners	CPC Marine Pty Ltd (ABN 41 103 579 324)
Length	63 metres
Max Breadth	13 metres
Draft	3 metres
Gross Tonnage	1779
Construction	NQEA Australia - Registration Australia Survey Passenger Ship
Main Engines	Caterpillar 3512B x 2
Crew	24
Cruising Speed	10-12 knots
No. of passengers including charter staff	72 (36 passenger staterooms - maximum occupancy 2 per room)
Mm-i vz	N/A
Stairs	Yes. 12-13 steps.



STATEROOMS & CABINS



BRIDGE DECK BALCONY STATEROOM

Spacious at 20sqm, and with private balcony, these six rooms are located on Bridge Deck and offer expansive ocean views. All rooms also feature a bluetooth dock compatible with all devices.



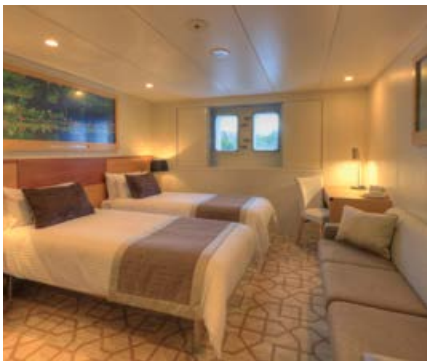
PROMENADE DECK - CATEGORY A STATEROOMS

Our 19 Prom A staterooms are 18sqm and feature picture windows for expansive ocean views. All rooms also feature a bluetooth dock compatible with all devices.



PROMENADE DECK - CATEGORY B STATEROOM

Located on the bow of the ship, these two rooms are 15sqm and feature picture windows for wide ocean views. All rooms also feature a bluetooth dock compatible with all devices.



MAIN DECK - (CATEGORY A) STATEROOM

Located close to the Dining Room, the six spacious staterooms in this category are 18sqm in size and feature large twin portholes. All rooms also feature a bluetooth dock compatible with all devices.



MAIN DECK - (CATEGORY B) STATEROOM

Located close to the Dining Room, the six Main Deck (Category B) staterooms are 18sqm and feature twin portholes. All rooms also feature a bluetooth dock compatible with all devices.