



coralexpeditions

AUSTRALIA'S PIONEERING CRUISE LINE



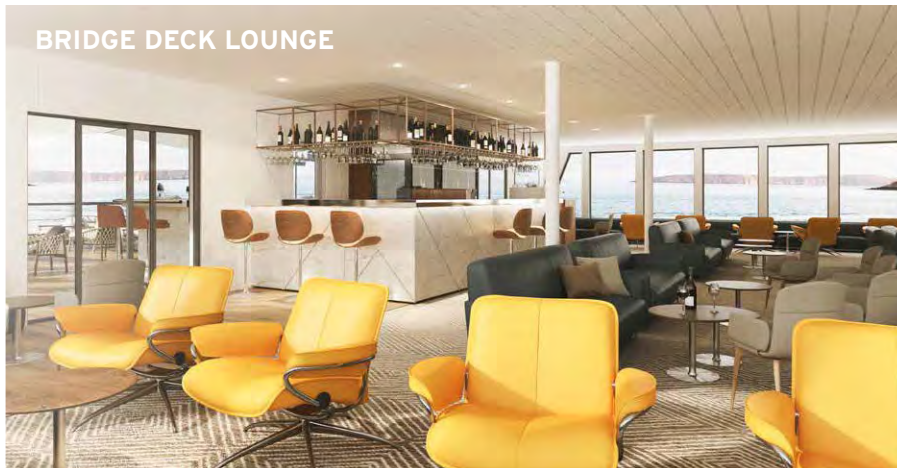
CORAL ADVENTURER

DISCOVER THE SHIP



ONBOARD EXPERIENCE

BRIDGE DECK LOUNGE



Designed and built to be the most modern tropical expedition ship afloat, *Coral Adventurer* will debut in April 2019. Now the largest ship in our fleet, she features the same comfortable Australian interiors, Xplorer tender mechanism, intimate guest experience, and personalized service that you have come to expect.

BRIDGE DECK BAR



FEATURES

EXPEDITION CAPABILITIES

- › Two trademark Xplorer tenders seat all passengers for shore excursions
- › Six zodiacs for more intrepid exploration
- › Lecture lounge with multimedia for daily expedition briefings and presentations
- › Small on-board Library
- › Shallow draft and advanced navigation and propulsion systems

MARINE IMMERSION

- › Navigator lounge in the bridge giving a vantage point of ship operations
- › Over 1000 sq m of open deck space including a wrap-around promenade deck with panoramic views
- › Engine room tours and high level of crew interaction with guests
- › Barralong Room for hosting scientific research or exhibitions

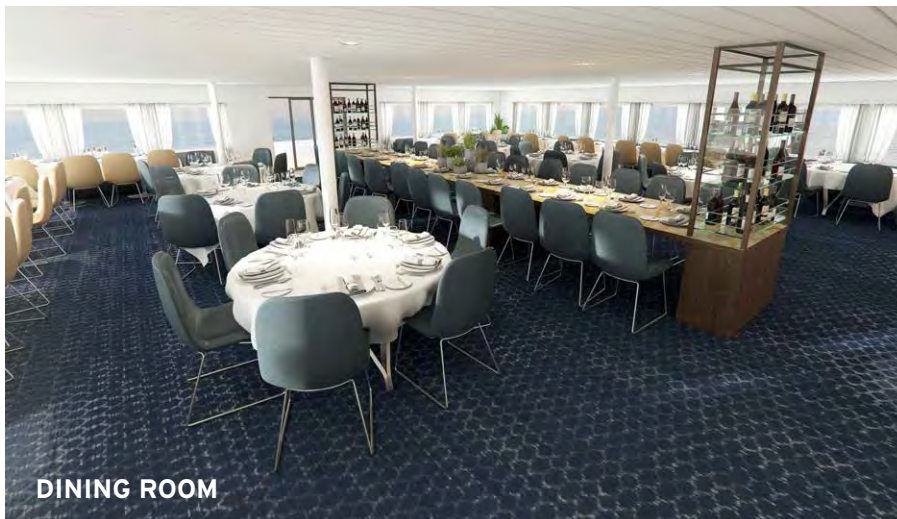
FOOD AND WINE FEATURES

- › Communal 'wine table'
- › Galley viewing window
- › Multiple indoor and outdoor bars, including our Explorer bar on the sundeck
- › Curated wine cellar featuring boutique wines and exceptional vintage Australian reds.

GUEST COMFORT

- › All outside guest cabins with en-suite bathrooms; majority have private balcony
- › Active stabilisers
- › Gym
- › Passenger elevator
- › Wi-Fi available in all guest areas

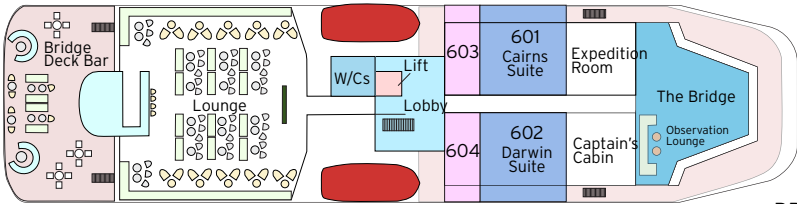
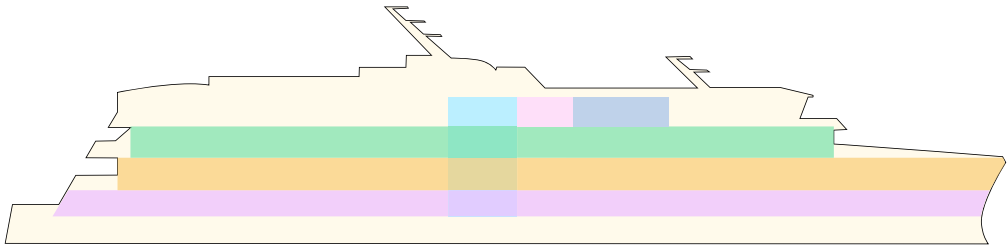
DINING ROOM



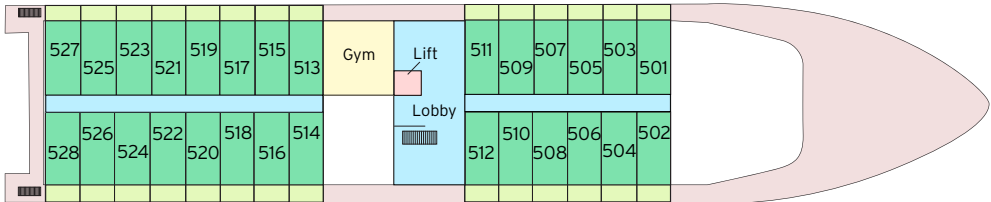
PRIVATE BALCONY



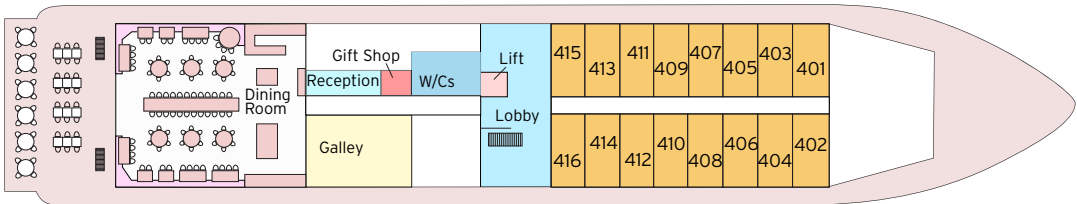
DECK PLAN & SPECIFICATIONS



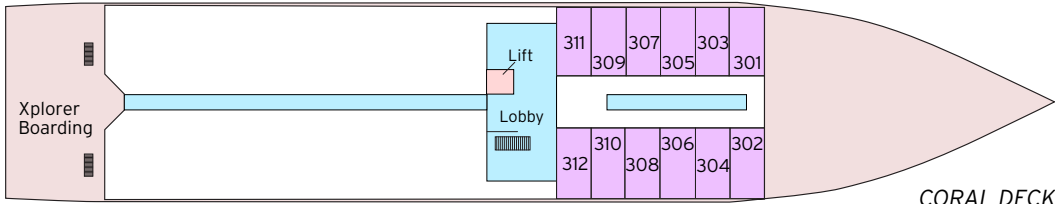
BRIDGE DECK



EXPLORER DECK



PROMENADE DECK



CORAL DECK

Name	Coral Adventurer
Owners	CPC Marine Pty Ltd
Flag	Australian
Year of Build	2019
LOA	93.4 metres
Beam	17.2 metres
Draught	4.5 metres
Gross Tonnage	5599 tonnes
Construction	VARD
Main Engines	Caterpillar 3512C
Azimuth Pod	Rolls Royce Azipull
Cruising Speed	13.8 knots
Max. passengers	120
Max. crew	48
Tenders	2 Xplorers, 8 Zodiacs

- BRIDGE DECK BALCONY SUITE
• 55.8sqm • Private Balcony • Twin or junior king beds
- BRIDGE DECK BALCONY STATEROOM
• 21.4sqm • Private Balcony • Twin or junior king beds
- EXPLORER DECK BALCONY STATEROOM
• 21.4sqm • Private Balcony • Twin or junior king beds
- PROMENADE DECK STATEROOM
• 17sqm • Picture windows • Twin or junior king beds
- CORAL DECK STATEROOM
• 17sqm • Porthole windows • Twin or Junior king beds

STATEROOMS



BRIDGE DECK BALCONY SUITE

• 55.8sqm • Private Balcony

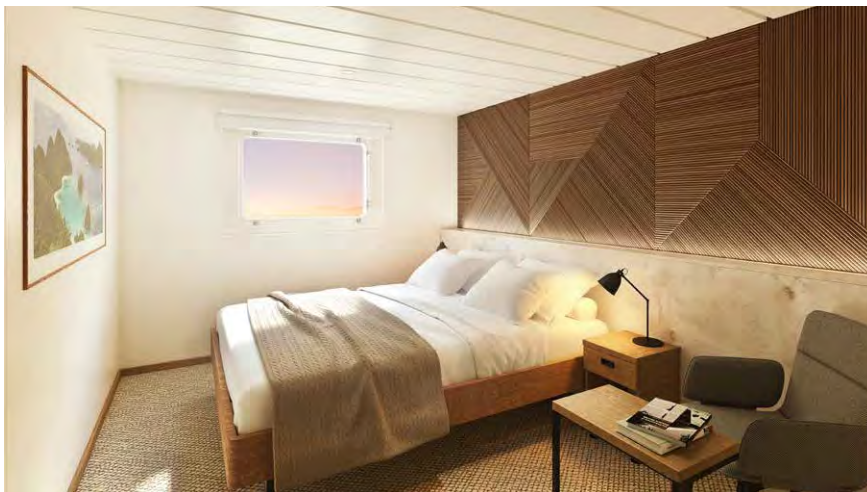
Our two Cairns and Darwin suites are spacious and elegant retreats after a busy day ashore. Suites are equipped with a lounge area, minibar and personal coffee machine. They have special King sized beds which can be separated into two singles. An 8 sq m private balcony has an outdoor daybed and lounge chair for two. A unique outside-facing bathroom with picture windows, bath and separate shower complete the suite experience. A complimentary minibar is replenished daily.



BRIDGE DECK BALCONY STATEROOM

• 21.4sqm • Private Balcony

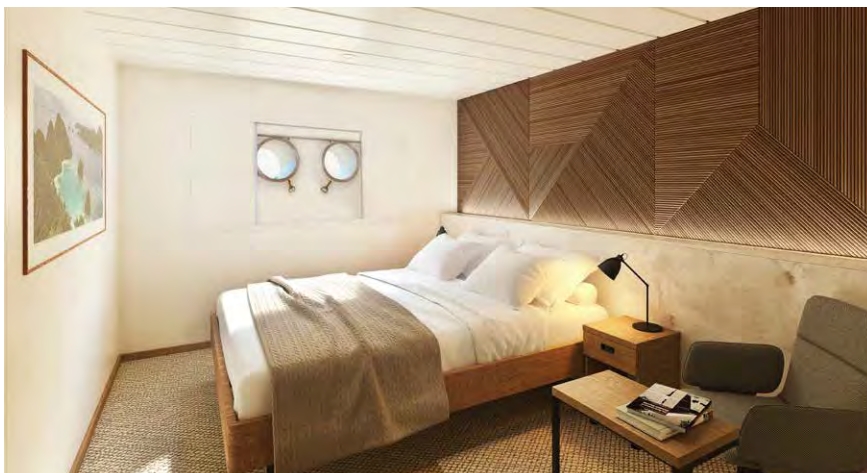
Our two Bridge Deck staterooms are comfortably furnished with a junior King size bed which can be separated into two singles. Enjoy a private balcony with seating for two.



PROMENADE DECK STATEROOM

• 17sqm • Picture windows

Promenade Deck Staterooms are located below the Explorer Deck and are furnished with a junior King size bed which can be separated into two singles. A large picture window gives you wide views of the world outside.



CORAL DECK STATEROOM

• 17sqm • Porthole windows

Coral Deck Staterooms are identical to the Promenade Deck Staterooms except for their location one deck below. These staterooms have twin portholes rather than picture windows.



WE GET YOU CLOSER TO:

- > THE KIMBERLEY
- > TASMANIA
- > CAPE YORK & ARNHEM LAND
- > THE GREAT BARRIER REEF
- > NEW ZEALAND
- > ISLANDS OF INDONESIA
- > THE SOUTH PACIFIC



Contact us today or speak with your travel agent.

Online www.coralexpeditions.com
 Email reservations@coralexpeditions.com
 Freecall within Australia 1800 079 545
 Outside Australia +61 7 4040 9999

Head office PO Box 2093 Cairns 4870 QLD Australia
 ABN 51 010 809 417 Issued November 2018



coralexpeditions
 AUSTRALIA'S PIONEERING CRUISE LINE